

# Proper Use of G2211 Complexity Service Code



## Identify Appropriate Patients

Appropriate patients are those being managed for serious and/or complex conditions who present for episodic care of an illness or injury.

## Perform Services Related to G2211

The work of the G2211 is the increased complexity associated with the care of the episodic problem addressed due to the serious and/or complex managed problem(s). This is managing the “longitudinal” care of the patient.



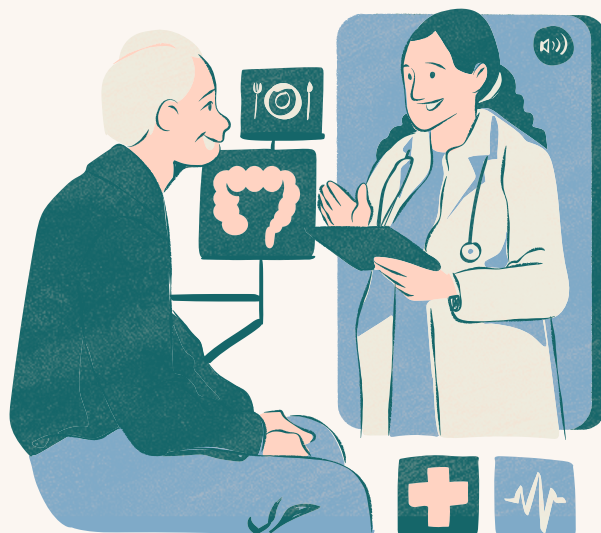
## Documentation of G2211

To bill the service, the work should be documented as performed. Documentation should identify the history, the current treatment plan, goals of care, and any previously memorialized similar episodic events with adverse outcomes. In addition, concerns and/or considerations of the current episode of care. Updates to the Longitudinal Care Plan for this episodic event should be included.



## The Goal of G2211 on Patient Care

The goal is to improve patient care and outcomes by better managing serious and complex health issues through a Longitudinal Care Plan. This will be followed throughout all phases of the patient's care to improve overall outcomes and quality of care.



**NOTE:** Complexity associated with G2211 cannot also be used in conjunction with the E/M MDM for the level of service. G2211 is the allocation of the complexity associated with the single serious/complex condition, and therefore could not also be counted in the E/M.

# Terms & Definitions

## Definition: G2211



**G2211 as defined:** Visit complexity inherent to evaluation and management associated with medical care services that serve as the continuing focal point for all needed healthcare services and/or with medical care services that are part of **ongoing care** related to a patient's **single, serious** condition or a **complex condition**.



## Serious | Complex Condition

The key is also the term “ongoing.” Ongoing would infer that this is a condition that the provider actively manages for the patient, and the problem(s) require complex management due to the seriousness of the healthcare-related issues.



## Episodic Care | Episodic Care Plan

When treating a problem addressed “today,” this is episodic care. It is care provided per episode. The Episodic Care Plan (ECP) would then be the treatment plan created to treatment of the problem(s) addressed.

## Longitudinal Care Plan | Management



**Plan:** A consolidated, active, and thorough plan that includes the current treatment, goals, and plans regarding serious and/or complicated conditions.

**Management:** Caring for the patient episodically and/or through direct care of a single serious/complex problem with updates to the care plan.

\*NOT copy/paste/carried forward or templated/macro. This should be specific to the encounter.

## Implementation Plan

Create an internal policy to define the gray terms such as serious and complex, longitudinal care, and guidance as to specialties best suited for G2211 services.



Educate coding and auditing team on the proper documentation and implementation of the policy and the CMS Guidelines, and recruit support to update E/M templates for G2211.

Mandatory education for ALL providers on the proper use and documentation of the G2211, including those specialties who may NOT benefit to prevent erroneous misuse.



Pre-Validation coding reviews for all G2211 services billed per provider, until internal proficiency is reached .

